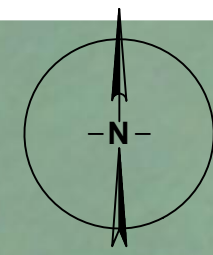
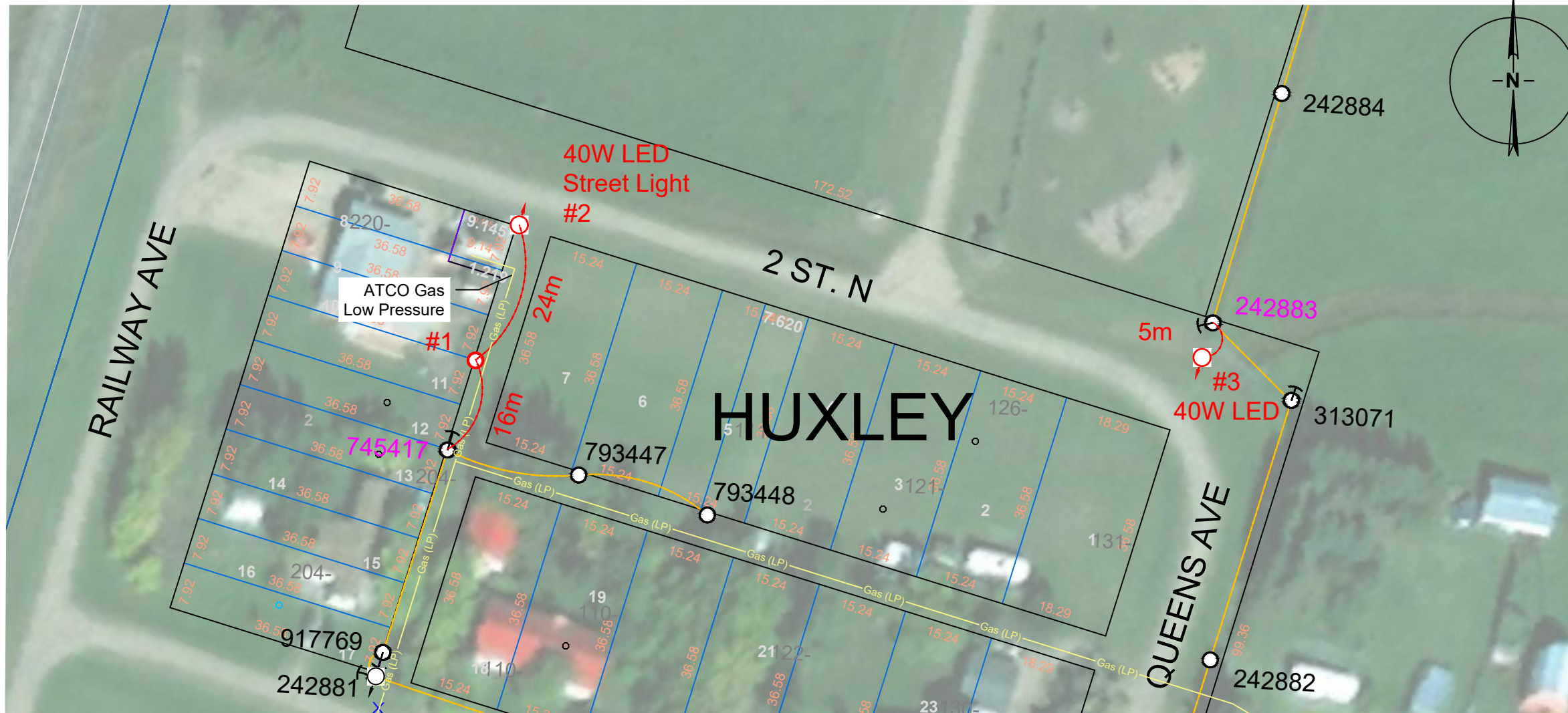


THIS DRAWING IS THE PROPERTY OF ATCO ELECTRIC LTD. AND CONTAINS PROPRIETARY AND CONFIDENTIAL INFORMATION WHICH MUST NOT BE DUPLICATED, USED OR DISCLOSED OTHER THAN AS EXPRESSLY AUTHORIZED BY ATCO ELECTRIC LTD.



NOTES:  
 1. DISTANCES ARE IN METERS AND DECIMALS THEREOF.  
 2. RED - NEW  
 MAGENTA - MODIFY  
 CYAN - REPLACE OR RE-CONDUCTOR  
 BLACK - EXISTING  
 GREEN - SALVAGE

3) SITE ID: TBD  
 SITE ID: TBD

LEGEND:

POWER POLE	O/H 1 PHASE	O/H 3 PHASE	ANCHOR
TRANSFORMER: O/H 1PH	O/H 1PH. W/ NEUTRAL	O/H 3PH. W/ NEUTRAL	PADMOUNT
U/G 1 PHASE	U/G 3 PHASE	LUMINAIRE	PEDESTAL
REGULATOR	SWITCH CUBE	PULL BOX	OMNI BALL
FUSED SWITCH	GANG SWITCH	FAULT INDICATOR	SOLID BLADE SWITCH
			CIRCUIT RECLOSERS

ENGINEERING APPROVAL

**DO NOT BUILD**

REQUIRES ENGINEERING STAMP

**DO NOT BUILD**

REQUIRES ENGINEERING PERMIT

DESIGN CONTACT

JEN FRIESEN  
 587-282-0405  
 jennifer.friesen@atco.com

REV	DATE	DESCRIPTION	BY
0	01/25/2024	Preliminary Design	JF

**ATCO**

PROJECT NO.: 1103124 | LOCATION: Three Hills

DRAWING TITLE:  
 Kneehill County  
 2 St North, Huxley

DRAWN BY: JF | DATE: 01/22/2024  
 CHECKED BY: BB | SCALE: 1.170276

DWG #: 1103124-Landscape-Right 300-01

TAP OFF ASSET 745417, BUILD 40M OF OVERHEAD SECONDARY TO STR # 2, INSTALL NEW 40W LED STREET LIGHT 0.6M ON ROAD ALLOWANCE

TAP OFF ASSET 342883, BUILD 5M SOUTH WEST, INSTALL NEW 40W LED STREETLIGHT  
 \*ATCO TO OBTAIN PERMISSION FROM KNEEHILL COUNTY TO PLACE STR # 3 WITHIN THE ROAD ALLOWANCE.

HYDROVAC REQUIRED

