

Subject: **EPR Extended Producer Responsibility**  
 Meeting Date: Tuesday, July 23, 2024  
 Prepared By: John McKiernan, Manager of Environmental Services  
 Presented By: John McKiernan, Manager of Environmental Services

**STRATEGIC PLAN ALIGNMENT: (Check all that apply)**

	<input type="checkbox"/>		<input type="checkbox"/>		<input type="checkbox"/>		<input type="checkbox"/>		<input checked="" type="checkbox"/>
High Quality Infrastructure		Economic Resilience		Quality of Life		Effective Leadership		Level of Service	

**RELEVANT LEGISLATION:**

**Provincial (cite)-** Provincial Regulation

**Council Bylaw/Policy (cite)-** N/A

**BACKGROUND/PROPOSAL:**

The Provincial Government has mandated the Extended Producer Responsibility (EPR) for the recycling of single-use products, packaging, and paper products (PPP) as well as hazardous and special products (HSP)

The Provincial Government has tasked the Alberta Recycling Management Authority (ARMA) with overseeing the program and developing the relevant bylaws and policies.

Communities were encouraged to register for the program but were not required to if they intended to continue funding and operating their own recycling programs. Kneehill County is registered as a Community.

The program is intended to shift the financial and operational burdens from communities to the producers of the materials identified as either PPP or HSP.

PPP is collected at County transfer sites through the E360 recycling bin at the Kneehill County-operated Three Hills Transfer Site and the cardboard and newsprint bins located at most of the other County-operated transfer sites.

Single-use Products, Packaging, and Paper Products (PPP) include the following materials from the residential sector:

rigid and Single-use products, packaging, and packaging like products made from plastic (both flexible), metals, glass, and paper.

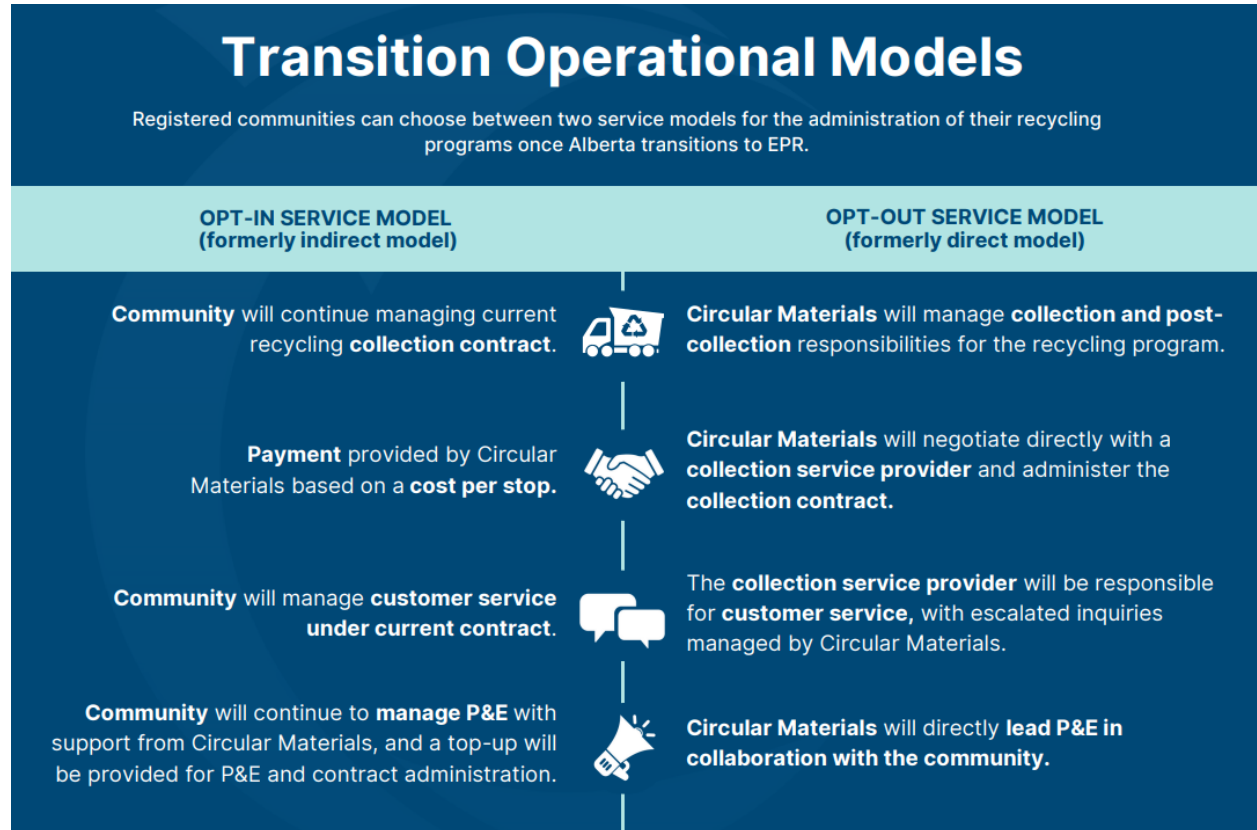
Paper products such as flyers, brochures, newspapers, magazines, etc.



**DISCUSSION/OPTIONS/BENEFITS/DISADVANTAGES/OTHER CONSIDERATIONS:**

As the deadlines for EPR fast approach, Communities that registered must decide between two service models before Aug.1, 2024. The Community can decide whether to 'opt-in' or 'opt-out'. It should be noted that this is only for the PPP portion of the program, as the HSP portion does not transition until a later date.

The Province has chosen only one Producer Responsibility Organization (PRO) to facilitate the program: Circular Materials (CM). Below is the model of opting-in or opting-out as provided by Circular Materials.



With each model, there are anticipated Pro's and Con's:

**Opt-in Pro's:**

- Maintain some control of the recycling program and branding of communication.
- Potential compensation for administration of the program.

**Opt-in Cons:**

- Potential to be invoiced for 'contaminated' loads (ie, industrial, commercial, institutional, agricultural).
- Reporting requirements are expected to be significant, providing CM with data regarding ratepayer visits and quantities.



## Opt-out Pro's:

- Circular Materials will manage the recycling program.
- Contracts and collection services coordinated by Circular Materials.
- Curbside collection off PPP will be introduced by Circular Materials to existing residents with curbside garbage collection.
- As this program is provincial-wide, all residents are expected to have the same opportunity to recycle.

## Opt-out Cons:

- Loss of control of the recycling program and how it is administered.
- Communication with residents will be directly from Circular Materials.
- Resident concerns and issues may still be directed towards the County even though we do not administer the program or will not necessarily be able to help resolve their concern.

Circular Materials is a non-profit organization working on behalf of the Producers, and it should be noted that they will look at the recycling program and how it can be done with the most efficiency and effectiveness. So, although the transition is to be as seamless as possible, there could be slight changes in how the material is collected, where it is collected, and where it is taken after collection. The program mandates that a certain percentage of materials must be collected, and those percentages are quite aggressive. Therefore, it is highly probable that the level of service they would provide would remain the same or increase. With an increase in the level of service, more recycling options could be seen at more locations.

The DDSWA has a role to play, and their decision to either opt in or opt out will have some effect on Kneehill County. As of this submittal, this decision is unknown.

It should be noted and known that this program is for residential recycling only. Any ICI (Industrial, commercial, and Institutional) recycling will not be accepted. Agriculture farms, small businesses, home businesses, etc., are considered ICI material and would not be accepted. If these items were received through the program, the County could be invoiced for them.

If Kneehill County chooses to accommodate the ICI material by putting in alternate bins at depots, this program and related costs would not be covered under this EPR program.

If a Community decides on one of the service models, it is unclear if it will be possible to reverse that decision in the future.

Another option that appears to be available for Communities is to unregister from the EPR program. This option would entail the community taking on all the financial, operational, and administrative burdens to provide recycling options for its residents.

### **FINANCIAL & STAFFING IMPLICATIONS:**

Dependent on the model chosen and the contract with Circular materials. The program is intended to shift the financial burden away from the Municipality, so savings in recycling bin rental/pick-up, DDSWA annual reconciliation, site expenses related to the collection of PPP, and the possibility of Circular Materials leasing the sites for collection would be expected.



**RECOMMENDED ENGAGEMENT:**

Directive Decision (Information Sharing, One-Way Communication)

Tools:

Public Notification

Other:

**ATTACHMENTS:**

n/a

**COUNCIL OPTIONS:**

1. Pursue the 'Opt-out' service model with Circular Materials
2. Pursue the 'Opt-in' service model with Circular Materials
3. Unregister Kneehill County from the EPR Program
4. Receive as information

**RECOMMENDED MOTION:**

That Council direct Administration to pursue the 'Opt-out' service model with Circular Materials

**FOLLOW-UP ACTIONS:**

Administration will commence with the EPR process to fulfill the direction of Council.

**APPROVAL(S):**

Mike Haugen, Chief Administrative Officer

Approved- 