

Lone Butte Solar Connection Project

Colin Harvey– Municipal and
Community Relations Manager

Stephanie Mitchell – Right-of-Way
Planner

January 14, 2025

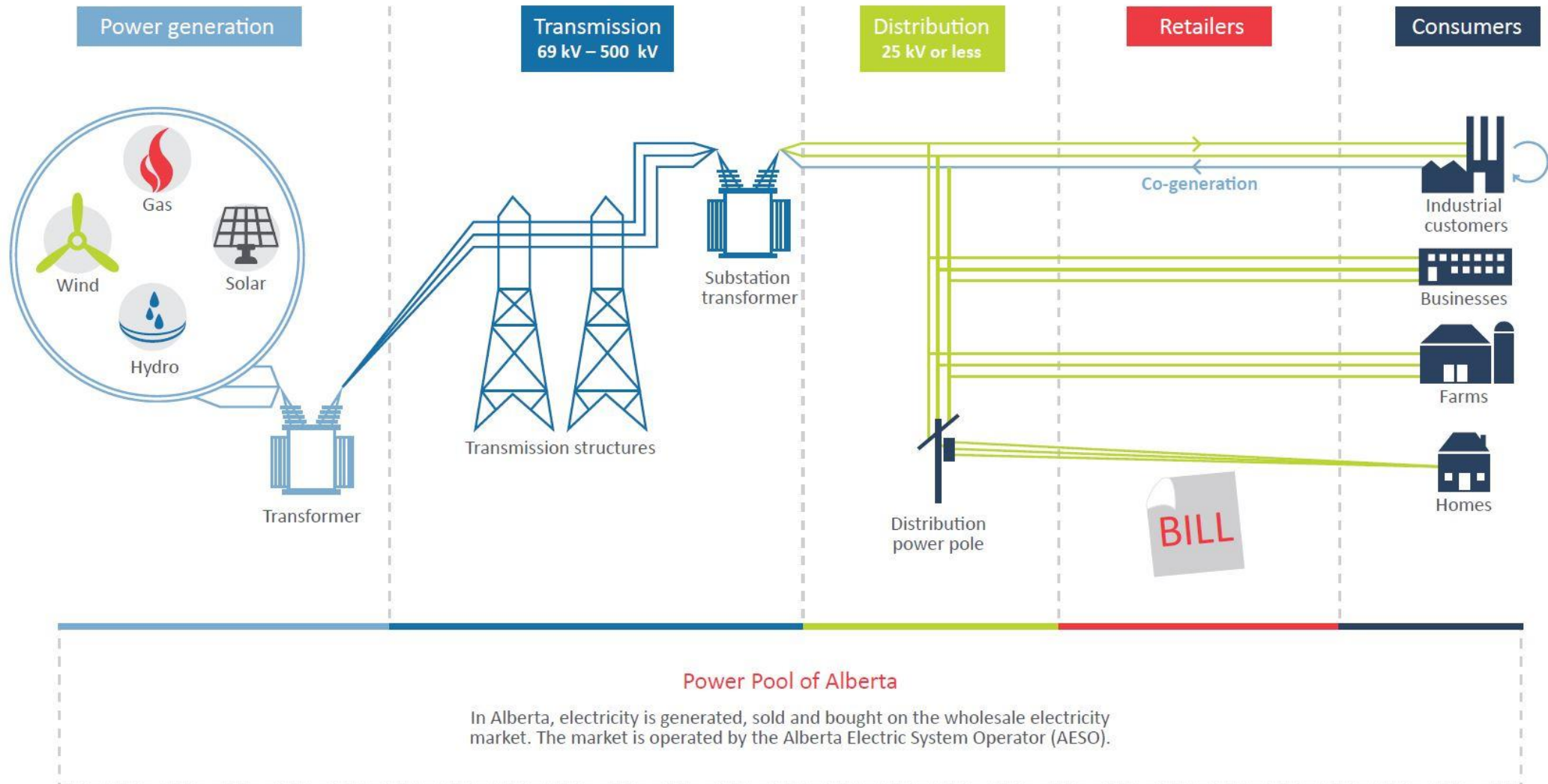


AltaLink is Alberta's largest electricity transmission provider

- 100% focused on energy solutions
- More than 13,000 km of lines and 300 substations
- Backbone of Alberta's electricity grid
- Serving 85% of Albertans
- Owned by Berkshire Hathaway Energy



The flow of power in Alberta



Key Industry Players

Alberta Electric System Operator (AESO)

Independent, not-for-profit system
planner

Alberta Utilities Commission (AUC)

Independent regulatory body

Transmission Facilities Owner (TFO)

Own and operate transmission facilities

Distribution Facilities Owner (DFO)

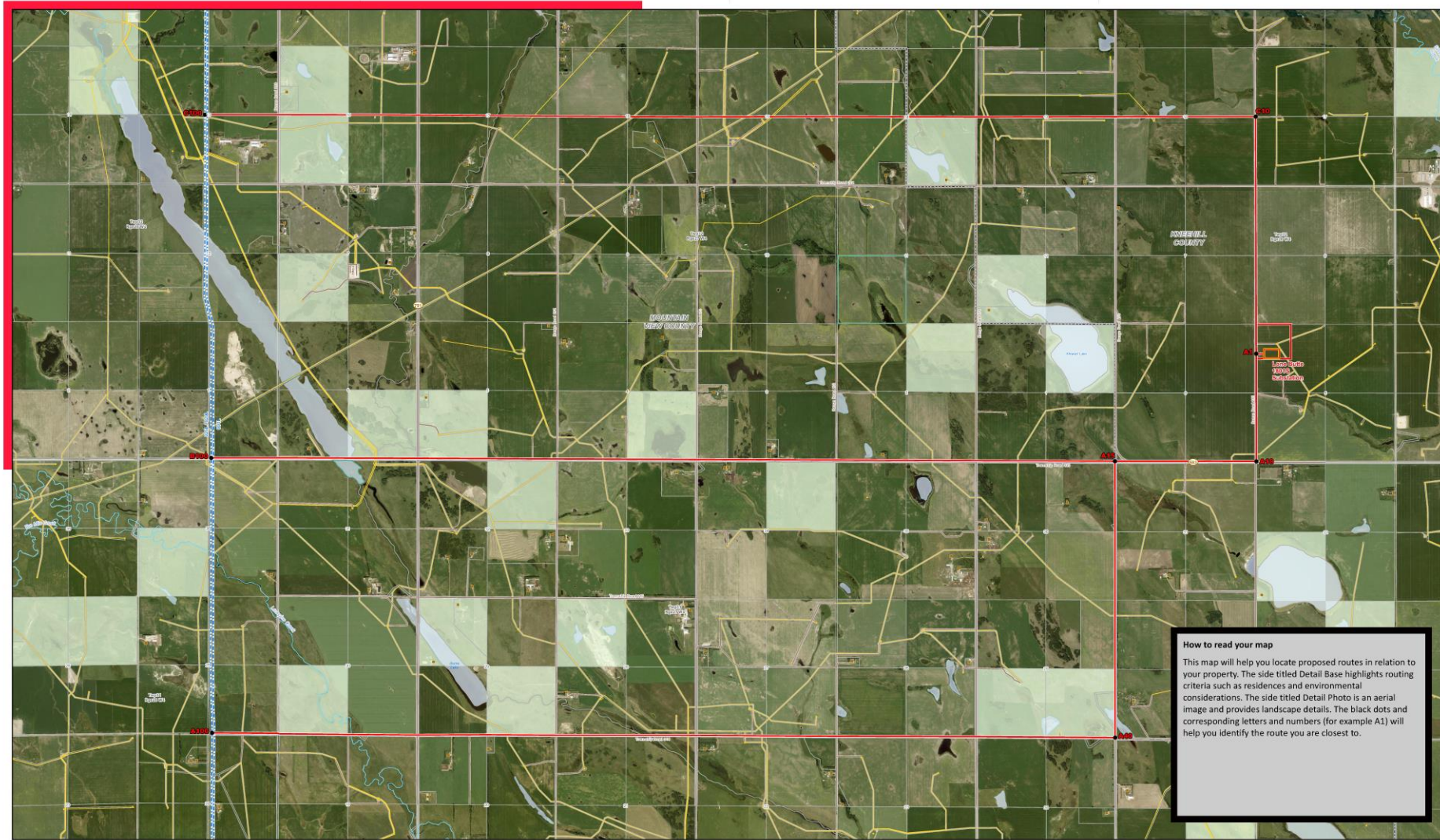
Own and operate distribution facilities

Fortis/REA

Lone Butte Solar Connection Project – Project Overview

- Purpose of the project is to connect Acciona Energy Canada Global Inc.'s solar project (located in Kneehill County) to the electrical grid.
- To achieve this connection, AltaLink is proposing to construct up to 17 kilometres of new 240 kilovolt (kV) transmission line.
 - The new transmission line will run between Acciona's proposed Lone Butte Substation (located in Kneehill County) and AltaLink's existing 929L transmission line (located in Mountain View County)

Lone Butte Solar Connection Project – Project Overview



How to read your map

This map will help you locate proposed routes in relation to your property. The side titled Detail Base highlights routing criteria such as residences and environmental considerations. The side titled Detail Photo is an aerial image and provides landscape details. The black dots and corresponding letters and numbers (for example A1) will help you identify the route you are closest to.

- LEGEND**
- Point Designation
 - Potential Transmission Line
 - Existing Transmission Line
 - Potential Customer Substation
 - Potential Substation Target Area
 - Residence
 - Wellsite
 - Municipal or County Boundary
 - Pipeline
 - River or Stream
 - Road
 - Crown Land
 - Environmentally Significant Area
 - Water Body

NO. 2024-11-19
 DRAWN BY: [Name]
 FILE NO.: Lone Butte DP DATE: 2024-11-19
 Although there is no warranty or liability that there are any errors associated with the data used to generate this product or in the product itself, users of these data are advised that errors in the data may be present.
 Photographs dated 2023. Source: Esri, Microsoft, Earthstar Geographics, and the GIS User Community

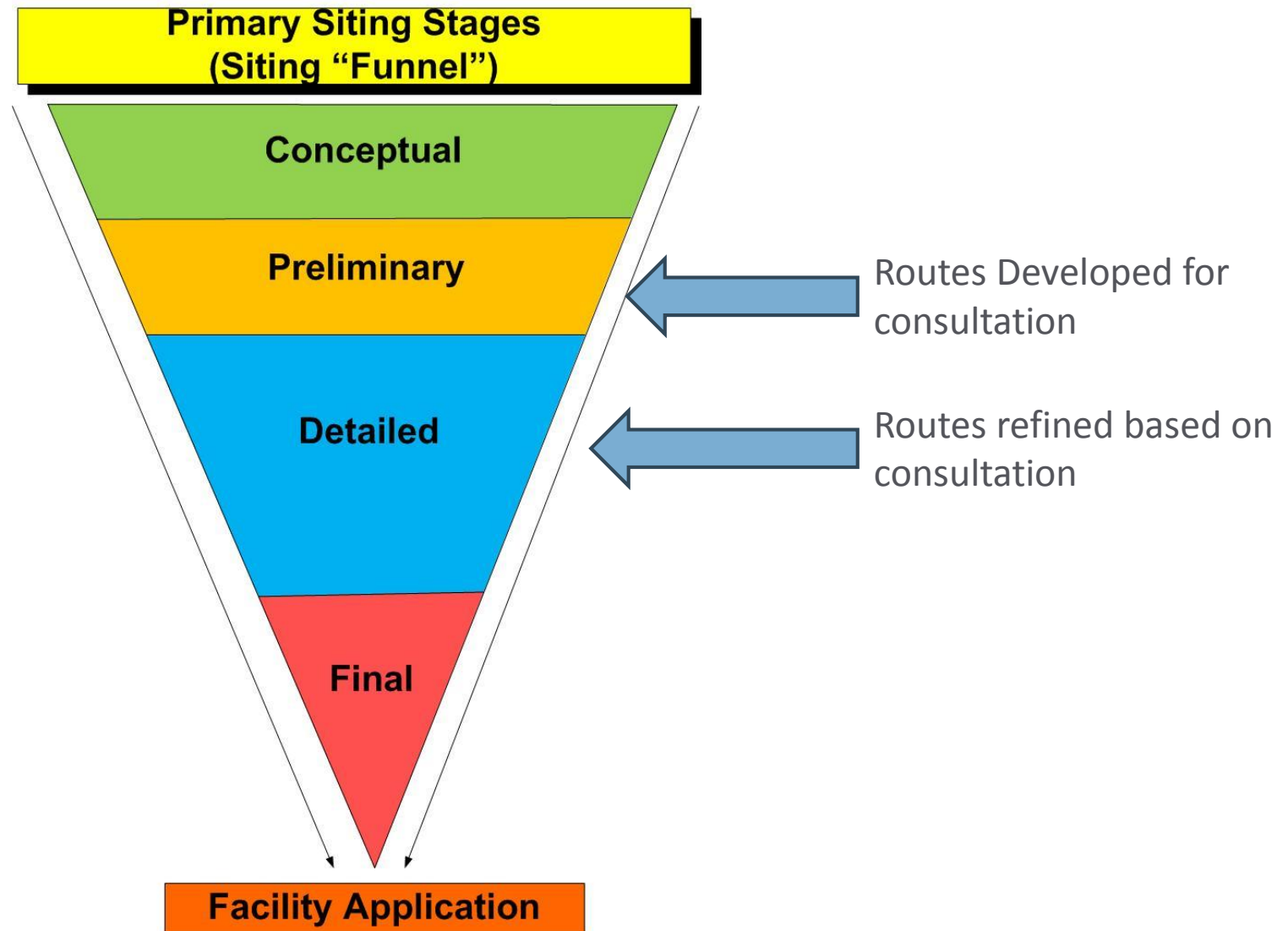


DETAIL PHOTO DP1
ALTLINK
POTENTIAL
 Lone Butte Solar Connection Project
 240 KV TRANSMISSION LINE

Proposed Structure Types

Location	Route details
<p>North option (A1-C10-C100)</p>	<p>The north route option will be primarily located on quarter line. The proposed structures on this route option will be:</p> <ul style="list-style-type: none"> • H-Frame structures • made of steel or wood • between 18-26 metres tall <p>A right-of-way of approximately 35 metres will be required (17.5 metres on either side of the quarter line.)</p> <div data-bbox="1584 211 1893 649" data-label="Image"> </div> <p data-bbox="1584 668 1893 721"><i>The H-Frame structures will look similar to the above.</i></p>
<p>Central option (A1-A10-A15-B100)</p> <p>South option (A1-A10-A15-A40-A100)</p>	<p>The central and south route options will primarily be located within road allowance. The proposed structures on these route options will be:</p> <ul style="list-style-type: none"> • monopole structures • made of steel or wood • between 30-40 metres tall <p>A right-of-way of approximately 15 metres on property will be required.</p> <div data-bbox="1584 759 1893 1225" data-label="Image"> </div> <p data-bbox="1584 1243 1893 1296"><i>The monopole structures will look similar to the above.</i></p>

Siting Process



Who do we talk to?

- Affected Landowners
- First Nations
- Industry stakeholders (O & G, telecommunications, etc.)
- Environmental organizations
- Local and provincial governments (elected officials and planning departments, other departments as required)

Identifying Route Options

- Factors used to identify and refine route options include:
 - Agricultural
 - Residential
 - Environmental
 - Existing infrastructure (oil and gas infrastructure, irrigation, etc.)
 - Other considerations (shelterbelts, airports, etc.)

Project Schedule

Notify and Consult with Stakeholder	January to November 2025
File Facility Application with AUC	November 2025
Start Construction if Approved	January 2027
Construction Completion	July 2027

Thank You

Email:

Colin.Harvey@altalink.ca